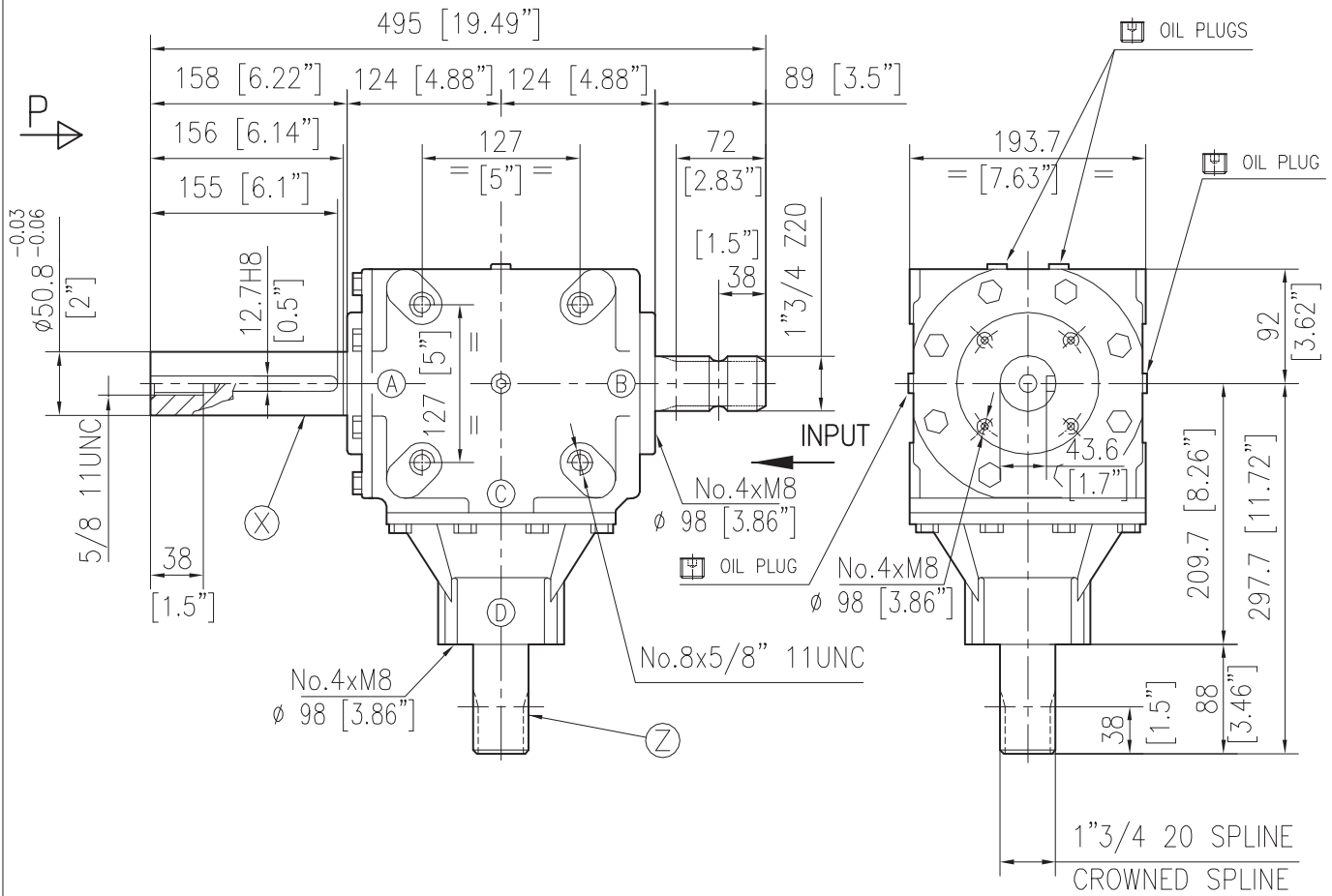
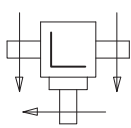


COMPANY	REF.	DESIGNATION
	DATE	T-279J
	01/DEC/09	CODE
		9.279.801.40

INDEX	COM. N°
40	011.373

VIEW P



90° BEVEL GEAR UNIT	Ratio i	Rated input r.p.m.	Rated input power HP	Rated input power kW	Rated output torque da Nm	Weight Kg	Oil <input checked="" type="checkbox"/> Grease <input type="checkbox"/> Type Quantity Lt.							
	1 : 1	540	100	73.5	126.1	43_	SAE.90EP 2.5							
	Gear Arrangement 	Bevel couplings				Cylindrical couplings				Bearings				
		Helicoidal	Teeth number				Module	Helicoidal	Teeth number				Module	A
	Straight	Z 1	Z 2	Z 3	Z 4	M.	Straight	Z 1	Z 2	Z 3	Z 4	M.	B	30209
	*	21	21			7.14							C	32209
													D	30209
													E	
	Components material													
	Casing	Shaft X	Shaft Z		Bevel gear		Spur gear					F		
ASTM 60-40-18	C40	C40		C40							G			
											H			

COMER INDUSTRIES reserves the right to make any change to this product without prior public acknowledgement

COMER INDUSTRIES S.p.A. 42046 Villanova di Reggiolo (R.E.) Italia Tel. 0522\974111 (9 Linee) Telefax 0522\973249